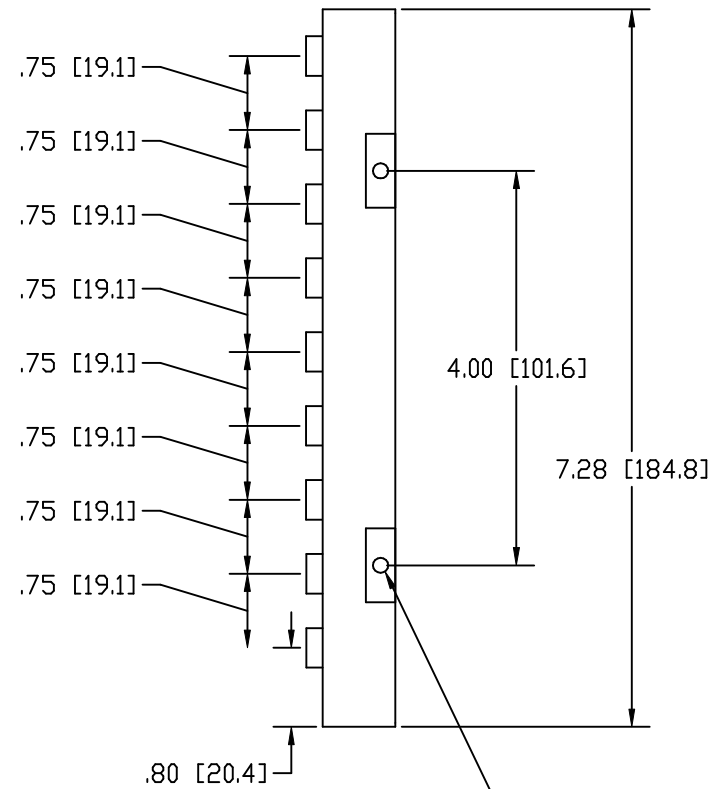
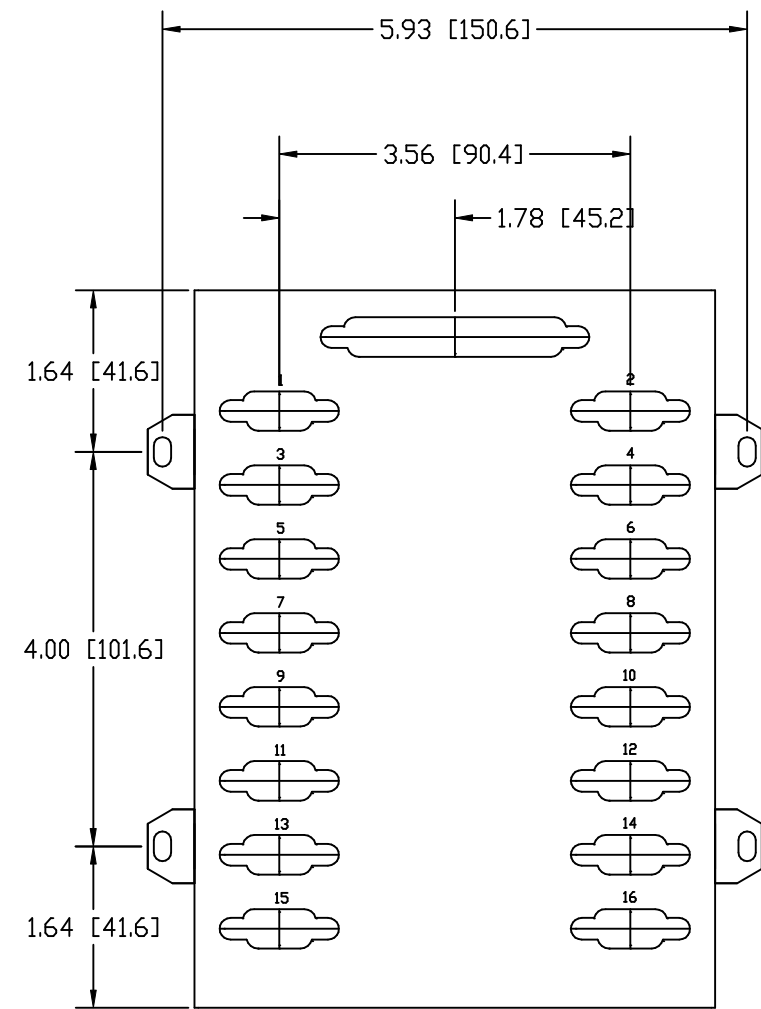
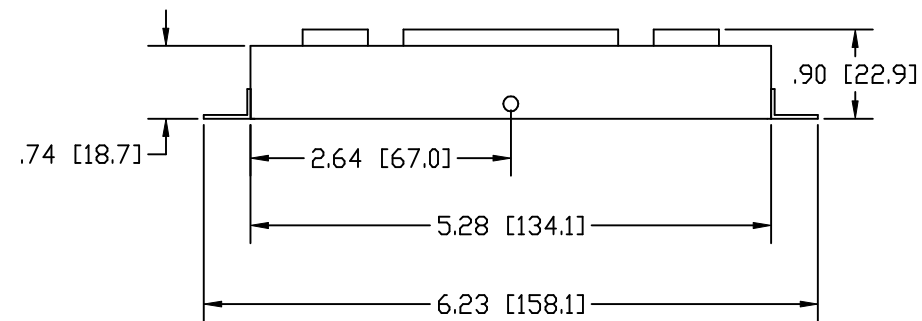


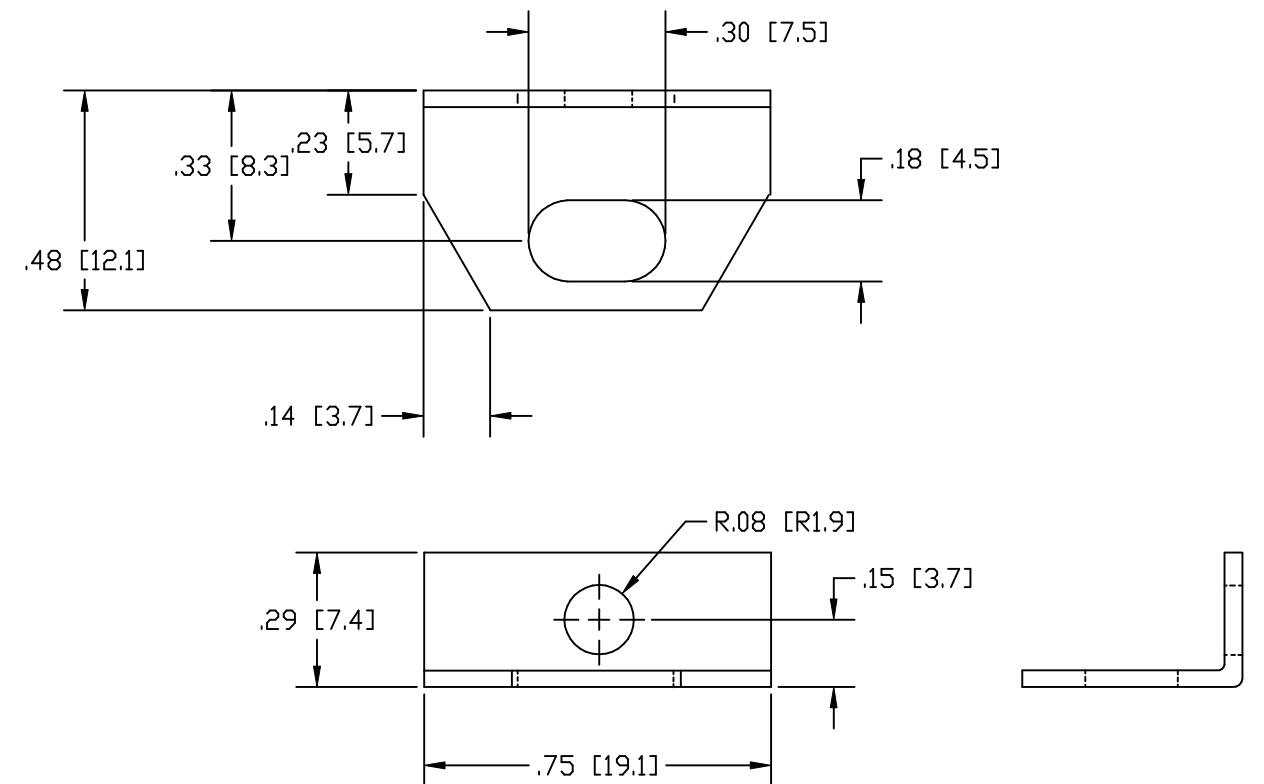
| REVISION RECORD | | | | | |
|-----------------|-----|----------------------------|----------|------|------|
| REV | ECO | DESCRIPTION | DATE | DRFT | APVD |
| 01 | N/A | INITIAL RELEASE FOR REVIEW | 02/26/08 | SJL | |
| | | | | | |
| | | | | | |



4-40 THREADED HOLE
MAX SCREW LENGTH .25 [6.3]
(6 PLACES)



MINI MOUNTING CLIP DIMENSIONS (NOT TO SCALE)



| | | | | |
|--|-----------|------------------|-----------|--------------|
| DIMENSIONS ARE IN INCHES [MM] | | | | |
| CONTROL CORP. | | | | |
| TITLE ROCKETPORT INTERFACE, DB9, RS-232/422/485, 16-PORT 30030-4, 30035-9 | | | | |
| FILENAME RP_IFC_DB9_16P_01.DWG | | | | |
| SIZE B | BY SJL | DATE 02/26/08 | REV 01 | SHEET 1 OF 1 |