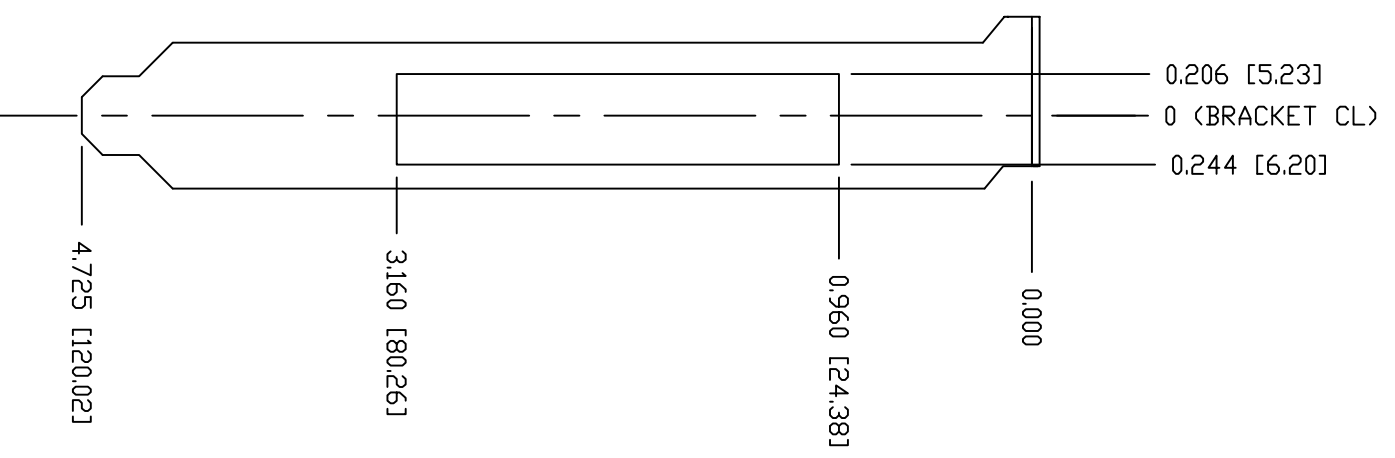
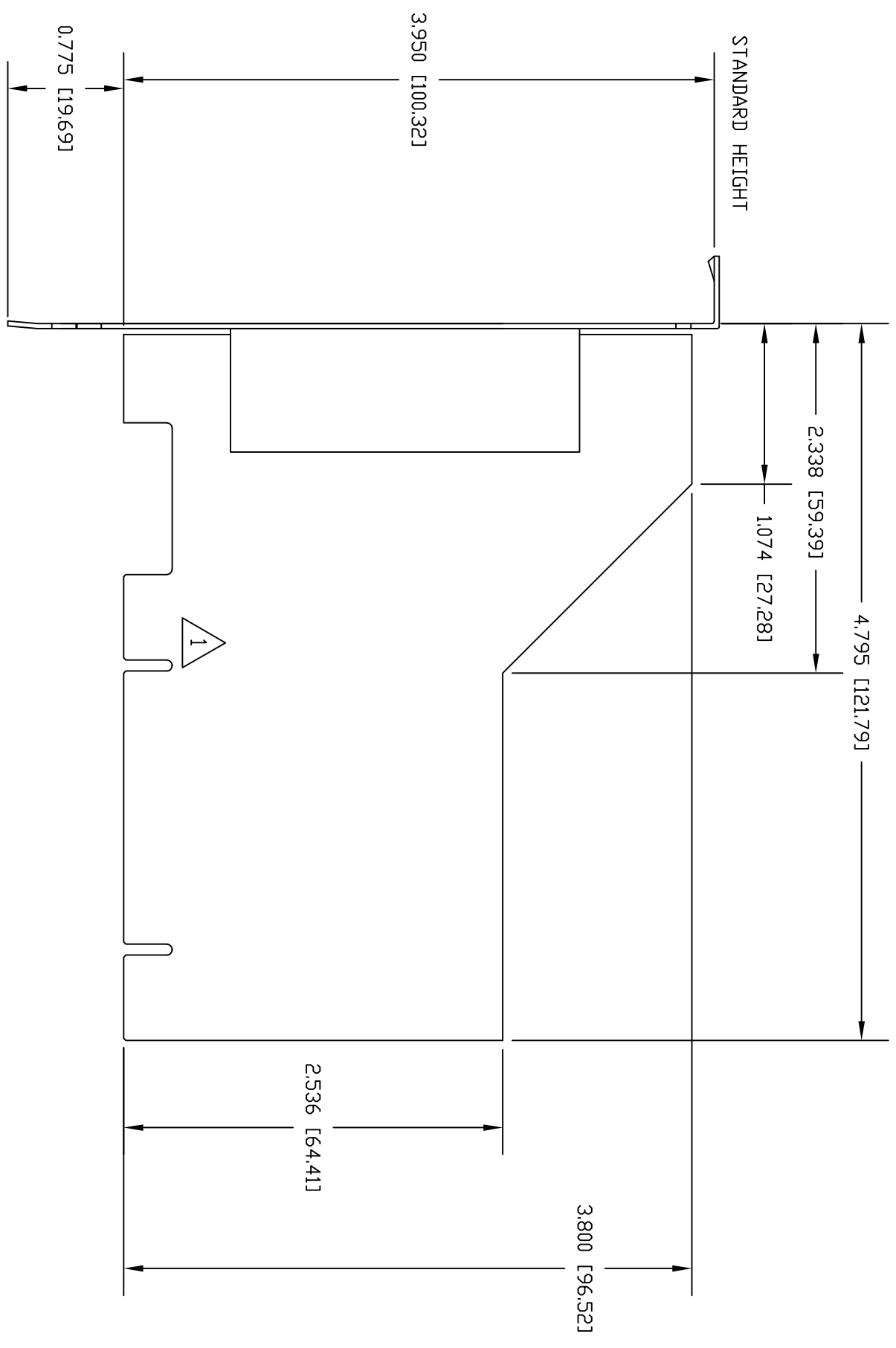


REVISION RECORD				
REV	ECD	DESCRIPTION	DATE	DFT APVD
A	-	Initial production release	03/08/17	MSW



CONNECTOR LOCATION



NOTES:

1. FOR MORE DETAILED DIMENSIONS, REFER TO PCI CARD ELECTROMECHANICAL SPECIFICATION, REV 1.0A.

DIMENSIONS ARE IN INCHES [MM]				
CONTROL CORP.				
TITLE ROCKETPORT INFINITY, 4J				
30023-6				
FILENAME	30023-6_RP_INFINITY_4J_A.DWG	SIZE	B	BY
DATE	03/08/17	REV	A	MSW
SHEET 1 OF 1				